

# EXPLORE NORTHWEST FLORIDA

*Choose Your  
Adventure*

Washington  
Jackson Gulf  
Bay Holmes  
Calhoun Liberty  
Franklin  
Gadsden Walton



## Welcome

Explore Northwest Florida invites you to move at the speed of nature. The landscape in our section of the Sunshine State is filled with treasures in natural wonders, wildlife, historical interests, mini-marvels and outdoor activities. The gorgeous parks are a hot spot for camping or day trips.

Fresh and salty water offer amazing activities. The waterways flow in different currents ranging from fresh crystal clear springs creating lakes and rivers, to salty seas washing ashore. It is all here to work and play in.

The charming small towns dotted throughout the region are the essence of southern charm and hospitality. The Spanish moss in oak trees drapes over canopy roads, perfect for afternoon drives. Admiring sunsets is required viewing.

Fresh local eateries, shopping and discovering marvels along the way entices visitors to continue the journey. This is a piece of our paradise where you Choose Your Adventure—water activities, parks, shopping, outdoor recreation, taking in local history, or relaxing on the beach.

The participating counties in Northwest Florida that make up the rural tourism group, range from Gadsden, Gulf, Liberty and Franklin to the east, Jackson, Calhoun, Bay and Washington center the region, while Walton, Holmes border the west.

The Apalachicola and Choctawhatchee Rivers define the region's boundaries. Telling our story of our wonders is the mission. It is time to Explore Northwest Florida where Old Florida blends with today's world.

# EXPLORE Contents NORTHWEST FLORIDA

4	Springs
6	Inland State Parks
10	Coastal State Parks
14	Beaches
16	Trails
18	Paddling
20	Charming Towns
22	Map
24	Wildlife
26	Diving
28	Shores
30	History & Culture
32	Scenic Drives
34	Events
35	Eateries
36	Famous NW Floridians
38	Coastal Camp Sites
40	Inland Camp Sites
42	Participating Counties
43	Visitors Centers

Contact Us  
[explorenwflorida@gmail.com](mailto:explorenwflorida@gmail.com)

Website  
[explorenwflorida.com](http://explorenwflorida.com)



**EXPLORE  
NORTHWEST  
FLORIDA**

*Choose Your  
Adventure*

Explore Northwest Florida regional visitors guide is published for Explore Northwest Florida organization. The information listed in the publication is as accurate as possible at press time. Errors or omissions are not the responsibility of the organizations listed. This publication is printed with funds from Visit Florida and DEO.

Explore Northwest Florida is branded under Riverway South Apalachicola Choctawhatchee.

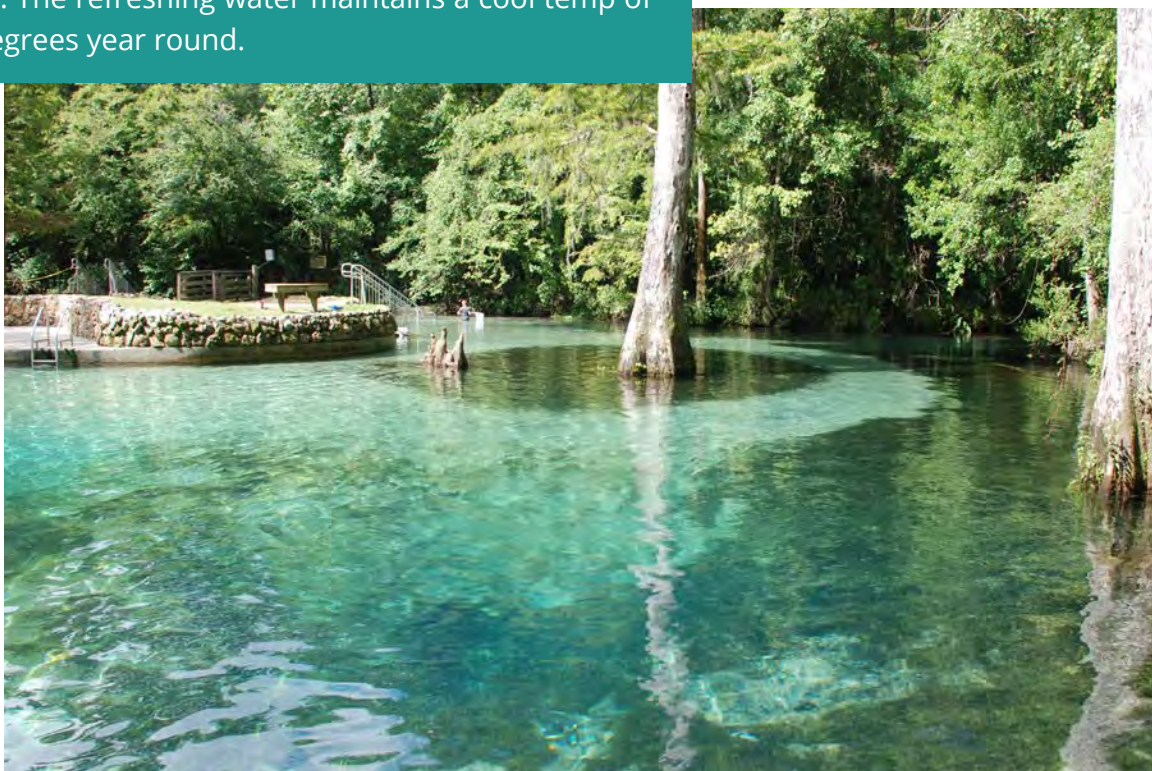
78 Degree Media LLC designed. Version III. Print 2020.

[explorenwflorida.com](http://explorenwflorida.com)

Explore  
Northwest  
Florida 3



Unspoiled natural beauty is hidden across the region. Here are two incredible springs worth discovering, Ponce De Leon Springs State Park and Merritt's Mill Pond. Explore the clear springs in boats, snorkel, or swim. The refreshing water maintains a cool temp of 68 degrees year round.



# EXPLORE *Springs* NORTHWEST FLORIDA

The powerful bubbly flow of spring water functions as the cornerstone of the fresh waterways. Around here the springs are a natural and refreshing piece of paradise. Its pure quality attracts wildlife and tourists.

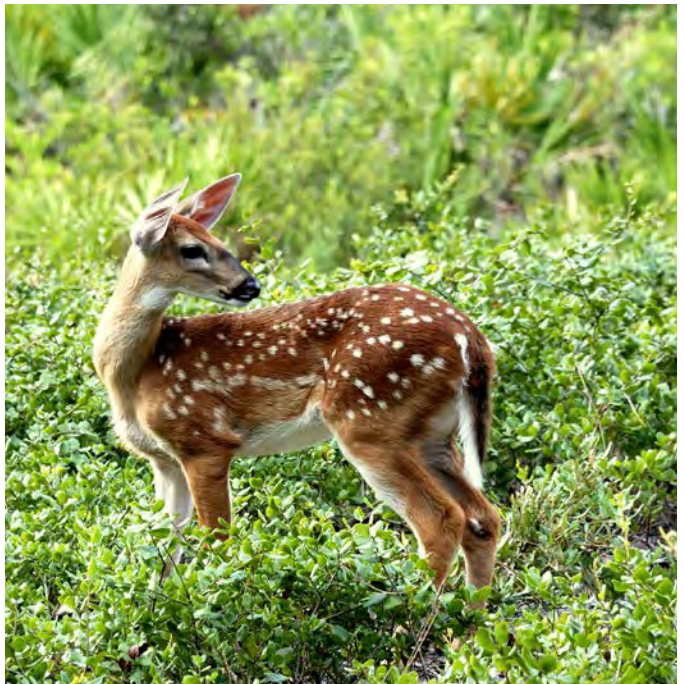




**Bluffs at Torreya State Park on Apalachicola River.**



**Wildlife spotted in the parks.**



**Deer are prevelant in the region.**

# EXPLORE Inland State Parks NORTHWEST FLORIDA

Our region is home to more than a dozen pristine state parks. Camping spots are reserved as quickly as the dust settling from the last visitor trailing out. These well-preserved sites allow visitors to see the wilds of Florida the way it was intended.

**Three Rivers State Park** sits on the largest reservoir lake in the region, Lake Seminole. The Chattahoochee and Flint Rivers form an anglers haven. It is located north of Sneads. Not only is it perfect for fishing, where bream and bass are specialties, but it is the backwater vibe that grabs attention. Keep an eye out for a rare fox squirrel, bald eagles, and alligator sightings.

Down from **Three Rivers State Park** on the east bank of the Apalachicola River, is a picturesque hidden state park, **Torreya State Park**. This large park has more than 13,000 acres of hilly terrain, civil war historic markers, and camping spots. The canopied hiking trails offer impressive elevation, and scenic views of limestone bluffs Florida's longest river, on the Apalachicola River.

It is quiet, pristine, and well worth the windy drive. A rare evergreen tree that grows on the unusually high bluffs near the river gives this park its name. It is a nutmeg that could be disguised as a Christmas tree.

The locals in nearby Bristol call it a "torry-yuh" but most visitors call it "tor-a-yah." Whatever the case, the sights from the lofty banks of the Apalachicola are spectacular. The plantation style Gregory House was built in the 1840s across the river in Jackson County. It was later moved to its current location and offers tours.



Tour the Gregory House at Torreya State Park.



The Florida Caverns State Park in Marianna is situated on the Chipola River and is Florida's answer to Mammoth Cave. Its uniqueness offers the only dry cave tour in the state. A guide eagerly tells the story of the formations of a wonderland of lit stalagmites, stalactites, soda straws, dripping water, bats, and rocks shaped like cartoon characters in about 45 minutes.

Camping, trails, horse stables, and picnic pavilions are scattered on the grounds. Rental canoes are available to explore the natural bridge at the Chipola River. The Visitor Center tells its-below-the-surface story. Keep in mind, the cave is closed to the public on Tuesdays and Wednesdays. Check the park's website, [floridastateparks.org](http://floridastateparks.org), for details on parks hours.

# EXPLORE Inland State Parks NORTHWEST FLORIDA



**Falling Waters State Park** is a 73-foot tall waterfall which locals proudly say is a must-see. The park is a charming find in this neck of the woods. Falling Waters is south of Chipley and offers 170 acres and short, hilly hiking trails through the woods. Expect to spot butterflies during migrations, gopher turtles, and rare black fox squirrels. The

park is littered with limestone formations and the loud falls drops into a deep ravine. Factor in this park's high elevation for Florida (at more than 320 feet) and consider it a nature-lover's treat.



Grayton Beach State Park is consistently ranked nationally as one of the most beautiful beaches. White sands. Dunes. Sea oats. Clear turquoise water in the Gulf of Mexico. Just add the ahhhhs.

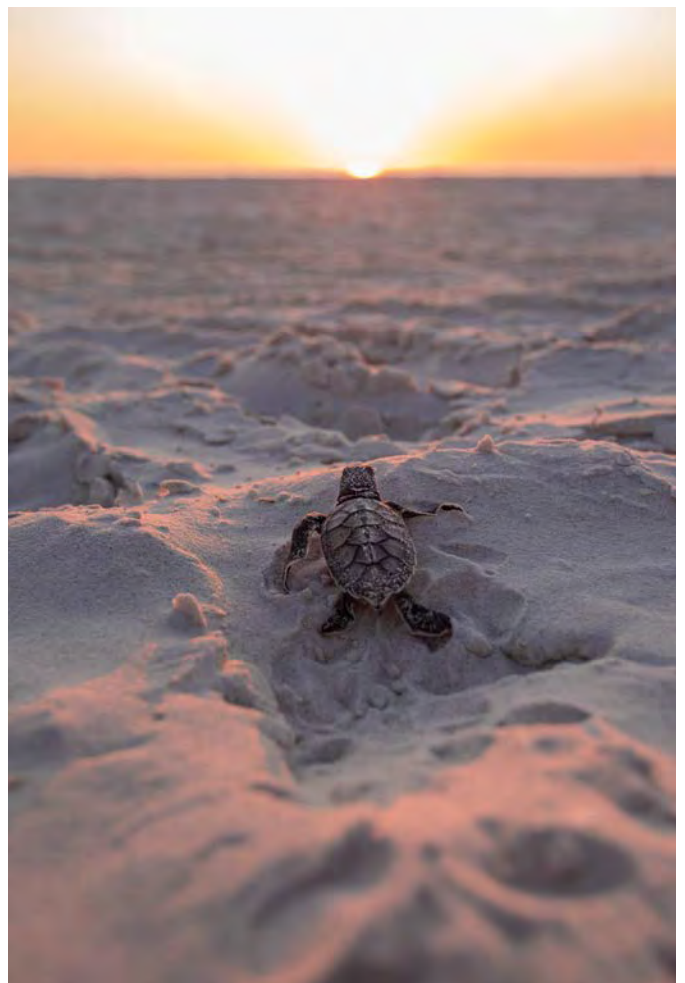
# EXPLORE Coastal State Parks NORTHWEST FLORIDA

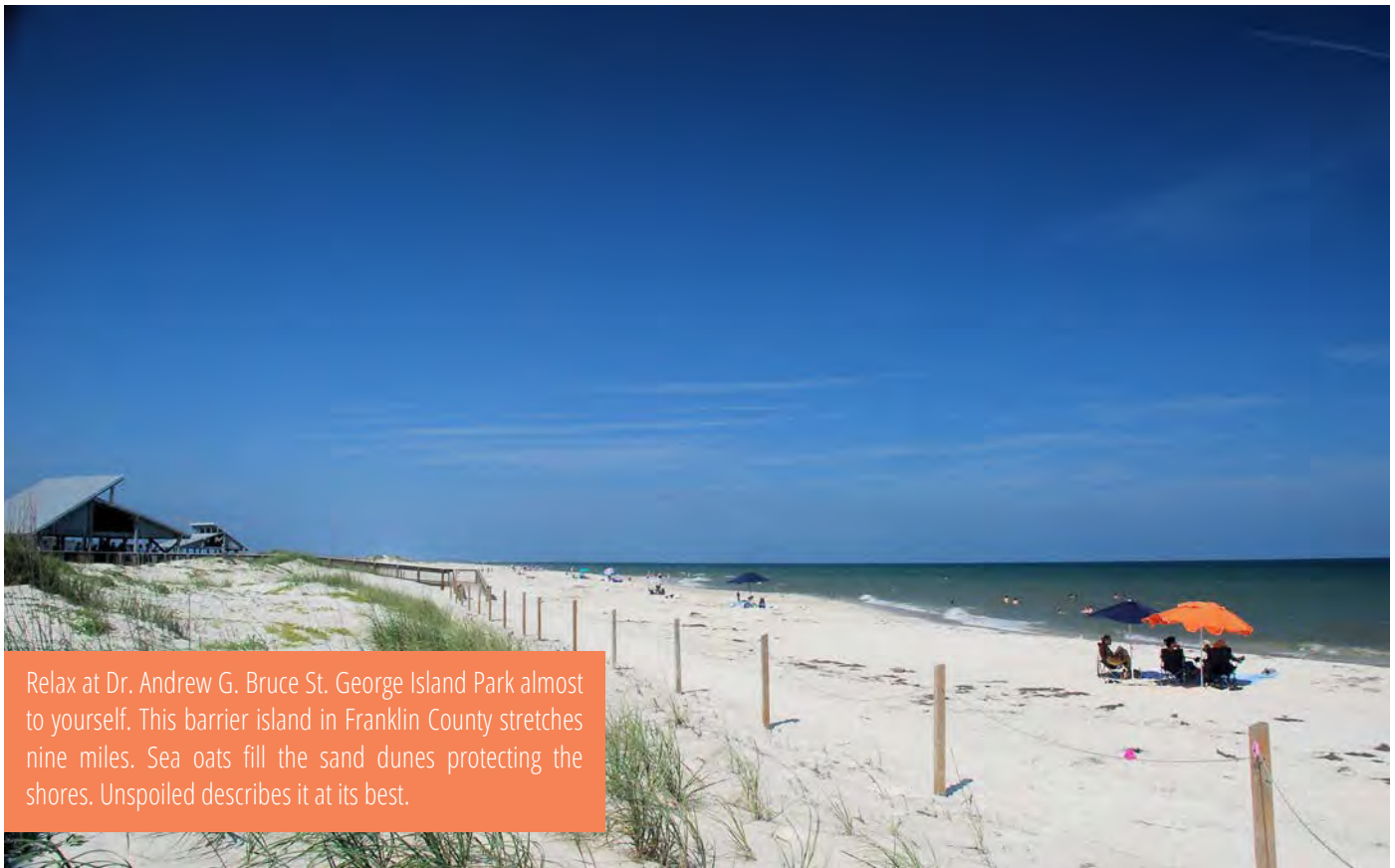
These unspoiled parks are protected, pristine, and peaceful, yet close to exclusive shopping and casual and fine dining eateries.

Dr. Beach raves about [Grayton Beach State Park](#), near Seaside on 30A, so why differ with an expert? The 2,200-acre park contains three major coastal lakes Western, Alligator and Little Redfish. These rare ecosystems are picture-worthy. Thirty cabins and campsites get booked as soon as available.

[Topsail Hill Preserve Park](#) in the west end of Walton County, is Grayton Beach State Park's lesser-known but equally appealing cousin. Check out the unspoiled beach front, the sand dunes or the freshwater lakes. There is a reason this park is always ranked high by guests.

[St. Andrews State Park](#), on the southeast end of Panama City Beach, is a perfect fit for anglers, picnickers, swimmers and campers. The big rocky jetties are perfect for fishing and boat watching. Paddle boarding is a hot hobby to view dolphins and fish. Take a day trip to Shell Island-a shuttle offers rides for a fee to the undeveloped island.





Relax at Dr. Andrew G. Bruce St. George Island Park almost to yourself. This barrier island in Franklin County stretches nine miles. Sea oats fill the sand dunes protecting the shores. Unspoiled describes it at its best.



Dolphins are frequently spotted playing up and down the Gulf Coast. Interesting fact is they sleep with half the brain asleep while the other half is awake to prevent drowning.

# EXPLORE Coastal State Parks NORTHWEST FLORIDA

The Gulf in all its splendor sets the stage for a relaxing time. Unwind at a secluded beach with only few others around, search for shells, and or grab a float and chill.

The **T.H. Stone Memorial St. Joseph Peninsula State Park** on Cape San Blas, is across the bay from Mexico Beach and Port St. Joe. The 1,800-acre remote park boasts awe-inspiring views of the Gulf of Mexico. Check the website for updates on camping availabilities at [floridastateparks.org](http://floridastateparks.org).

**Bald Point State Park** is secluded and where the earliest known pottery was discovered near Alligator Point. It is a rustic park best for strolling along the beach, hiking, paddling, bicycling or fishing. The beaches are narrow, however the views are spectacular.

**Eden Gardens State Park** which is north of Seagrove Beach, is 163 acres of Spanish moss, oak trees and cultivated gardens. Tours of the Wesley mansion are worth it for a few dollars more and the experience is a perfect day trip.





# EXPLORE Beaches NORTHWEST FLORIDA

Spectacular allure best describes the beaches in Northwest Florida. The squeaky white sand glistens against the sunlight while the turquoise water washes ashore.

These extraordinary beaches are a must-experience for everyone. They come in all shapes and sizes from unspoiled shores to lively beaches with restaurants and array of rental watersports.

Visitors have flocked to the beaches for years and it is nothing new on the discovery list, however, the feel of the beaches continues to bring them back to this amazing piece of paradise.

Some of the gorgeous beaches require tranquil seekers to bring all beach gear and enjoy the quietness. Other sandy shores offer rental chairs. Experience the different personalities of each beach in the region:

Beaches of South Walton  
Panama City Beach  
Mexico Beach  
Carrabelle Beach  
St. George Island  
St. Joe Beach  
Cape San Blas







Take a hike and enjoy a tranquil trek through nature. It is a chance to experience the remarkable wildlife, waterways, and landscape. Discover them in parks, preserves, and forests with short strolling loops or amazing, hilly trails.

Trails surround the picturesque landscape in forests, along waterways and in the great wide open. Flat terrain is the norm for most trails in the region with the exception of the Apalachicola River. Technical trail seekers can tackle the more hilly trails at Lake Talquin, Torreya State Park, Garden of Eden Trail at The Nature Conservancy. Here are a few interesting facts on a few trails:

**Hinson Conservation & Recreation Area** in Marianna - Take the trail along the Chipola River to see the Alamo Cave and the Ovens caves. The Alamo Cave is open on two sides, which is unusual for a cave.

**Camp Helen State Park** in Panama City Beach - Explore the coastal dune lakes, real salt marshes, or hike to the beaches.

**Torreya State Park** near Bristol- It is known for its hills and steep climbs. Not only is the place historically and botanically rich but it also an intense workout for hikers.

**Tate's Hell State Forest**, near Eastpoint - Take the Ralph G. Kendrick Dwarf Cypress Boardwalk to see some of the strangest trees on the planet. Yes, it is as unforgettable as it sounds.

## Hike The Trails

Blountstown Greenway, Blountstown  
Bald Point Beach Walk, Alligator Point  
Angus Gholson Nature Park, Chattahoochee  
Camel Lake Loop, near Sumatra  
Camp Helen State Park, Panama City  
Chattahoochee Nature Trails, Chattahoochee  
Conservation Park Green Trail, Panama City  
Econfina Nature Trails, South of Chipley  
Falling Waters Sinkhole Trail, Chipley  
Florida Caverns State Park, Marianna  
Florida Trail-Alaqua, near Grayton Beach  
Gap Point Trail, St. George Island  
Garden of Eden Trail, Bristol  
Gator Lake Trail, St. Andrews State Park  
Grayton Beach Nature Trails, Grayton Beach  
Lake Talquin Nature Trail, Quincy  
Ponce De Leon Springs Trails, Ponce De Leon  
Pine Log State Forest, Ebro  
Tucker Bayou Trail, Eden Gardens Park  
Wright Lake Trail, near Sumatra



## PADDLING TRIPS

*Saint Vincent Island and Refuge near Apalachicola.* This 12,300-acre protected barrier island is Florida wildness in the rough. It was once a hunting site but, since the late 1960s, it is home to bald eagles, Sambar deer, osprey, red wolves, river otters, snakes, and more. It is recommended for experience kayakers to reach the quarter mile distance in salt water but there is a shuttle service for a fee. Experience it here in its natural state.

*Western Lake in Grayton Beach.* There are only a few of these coastal lakes across the planet. It's fragile and magical surrounded by white sand dunes that border the Gulf. The calm brackish water is perfect for paddlers to explore.

*Holmes Creek near Vernon.* Clear springs. Cool water. Rope swings. Snorkeling nirvana. This spring-fed tributary of the Choctawhatchee River is a paddler's dream. Take a dip at Cypress or Beckton Springs for some of state's best swimming.

*Ocheesee Pond near Grand Ridge.* A backwater, inland, cypress tree-lined swamp that offers an intermediate paddling trail through its dark water. It is dead calm but canoeists and kayakers may be treated to sights of alligators, wood storks, turtles, and ospreys. The water level fluctuates, so ask the locals before launching at Arkansas Road.

*New River in Tate's Hell Forest near Carrabelle.* It's the tall pines that reflect in the water. There are no tourists as far as the paddler can see. Photographers will love it as much as naturalists.

# EXPLORE Paddle NORTHWEST FLORIDA

Paddle adventurers take it to the great wide open. It is a leisure way to explore the waters in shallow or deep, fresh or salty. It is best described as a fun time exploring at an easy pace. Marvel at marine life close-up and absorb the stunning views either on stand-up boards, in kayaks, or canoes.



The New River bleeds into Carrabelle River and then snakes its way to the burg of Carrabelle, which is the gateway to funky Dog Island.

*Lake Seminole Sloughs.* Paddle the scenic side trails along Lake Seminole and take in the spectacular wildlife. Birding, turtles on banks, and alligators are in all directions, however the gators prefer to stay out of the way.

The numerous paddling trails are endless in salty or fresh water. Venture out and explore the possibilities.

- Chipola River
- Choctawhatchee River
- Merritt's Mill Pond
- Apalachicola River
- Lake Talquin
- St. Andrews Bay
- Gulf of Mexico



**Carrabelle**



**Historic St. Andrews Neighborhood  
in Panama City**



**Marianna**



**St. Andrews Bay**



**Quincy**



**Port St Joe Bay**

# EXPLORE Charming Towns NORTHWEST FLORIDA

Old Florida is never too far away in Northwest Florida. The blend of old and new defines the vibe in these towns. Prewar historic homes are now converted into businesses, unique shops, and vintage interests.

**Apalachicola** is a quaint coastal town where hip-meets-Old-Florida. There is such a mixture to discover. Tour museums, walk along the river, shop in unique shops, or dine on fresh seafood.

**Blountstown** take a step back in time and tour the historic Pioneer Settlement, or hike the trail at Sam Atkins park, or view the train on display.

**Bristol** hidden lakes surround this small lumber town. Surprising rolling hills make this a hiker and biker paradise.

**Bonifay** known for its annual event rodeo in the fall and historic one-room log cabin, Keith Cabin.

**Carrabelle** is a small charming fishing village on the Carrabelle River. The world's smallest police station is located in an old telephone booth.

**Chipley** is home to the state's longest waterfall. Two unique attractions call home here- a wolf preserve and an alligator farm.

**Defuniak Springs** once known as home to The Education Resort of the South and the Chautauqua Movement. The oldest library in Florida is here.

**Marianna** is home to Florida Caverns State Park. Spring-fed Merritt's Mill Pond is known for clear waters and cave diving.

**Quincy** is home to antebellum wonders such as historic homes and the rich planting fields of the Red Hills. Tobacco barns are spotted along the back roads.

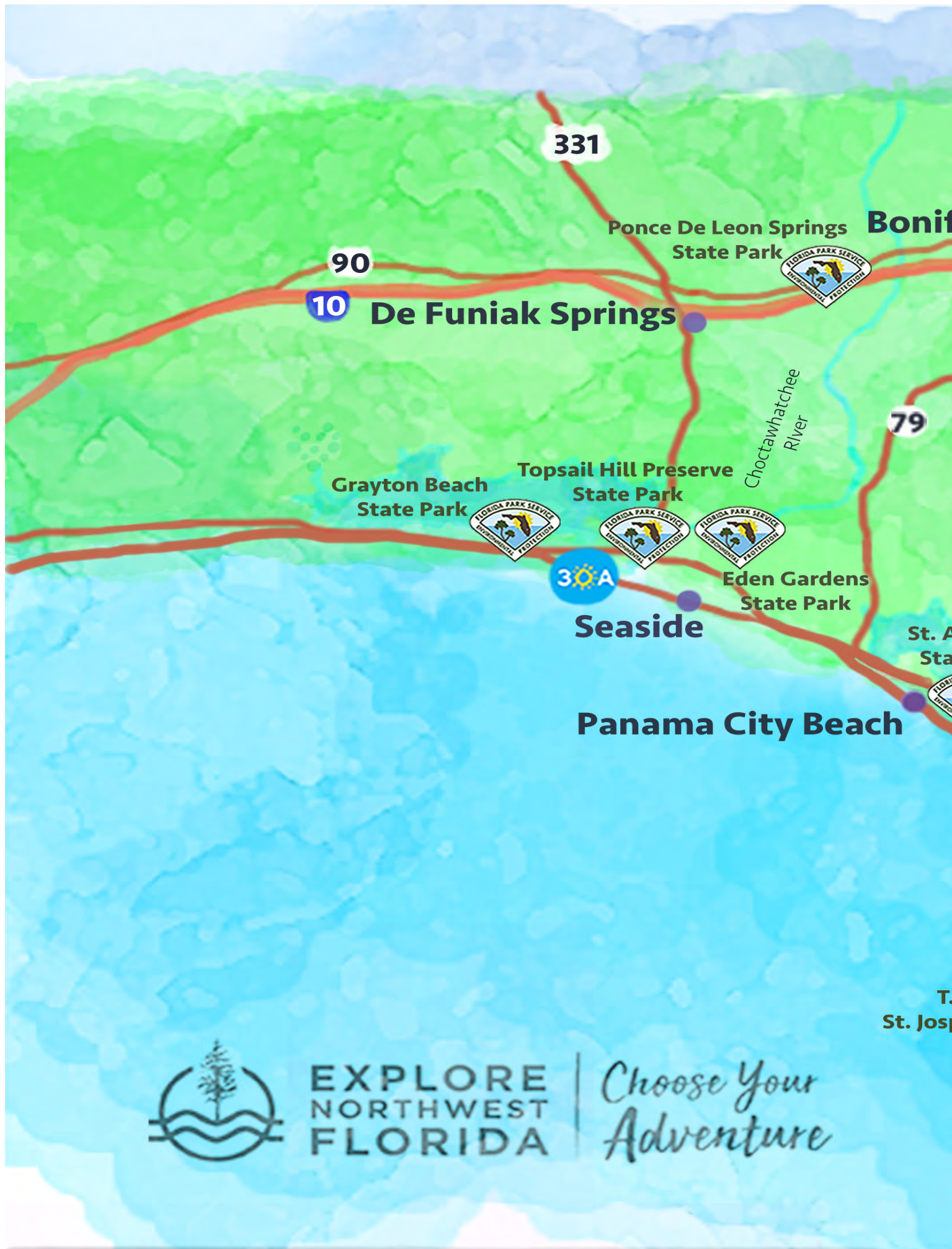
**Port St Joe** is small, quaint beach town along Port St Joe Bay with shops, restaurants and a large marina is a block away.

**Downtown Panama City and Historic St. Andrews** are pedestrian and pet-friendly neighborhoods filled with southern charm. Scenic St. Andrews Bay is also a sailor's delight.

**St George Island** this barrier reef is a strip with shores full of one-of-a-kind shells, few people, and stunning sunsets.

**South Walton Beaches** 30A neighborhoods attract visitors with it unique architecture styles and upscale shopping and dining.

**Wewahitchka** locals call it Wewa for short, is famous for its tupelo honey. It is located on the Chipola River, perfect for paddling. Dead Lakes is nearby that fishing is an anglers dream.



331

90

10

De Funiak Springs

Ponce De Leon Springs  
State Park



Bonifay

79

Choctawhatchee  
River

Grayton Beach  
State Park

Topsail Hill Preserve  
State Park



Eden Gardens  
State Park

30A

Seaside

St. Andrew  
State Park

Panama City Beach



EXPLORE  
NORTHWEST  
FLORIDA

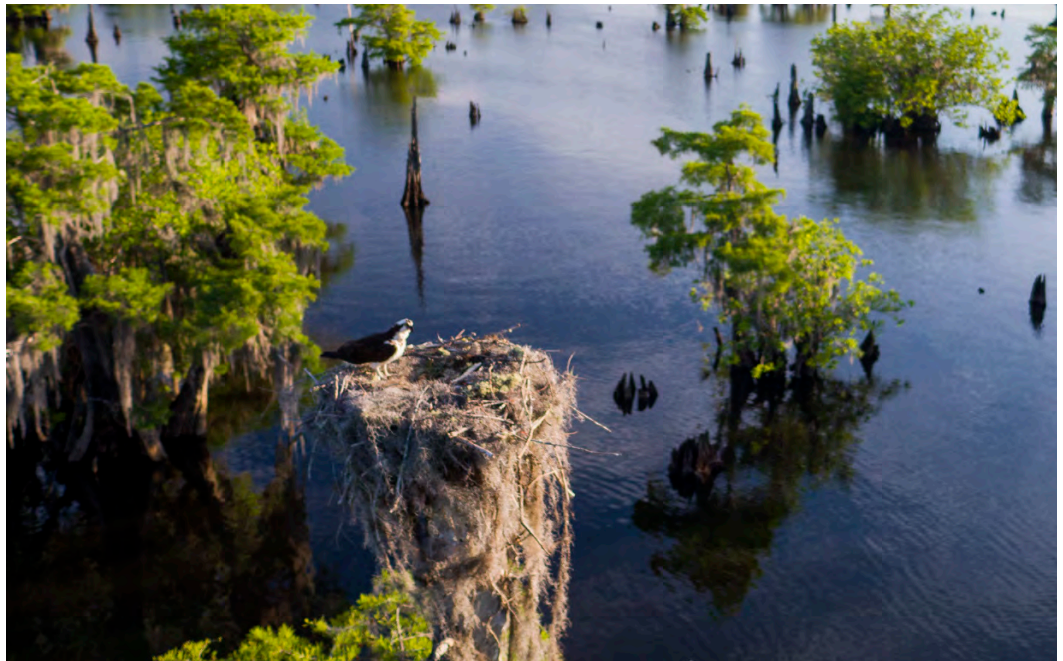
Choose Your  
Adventure

Tallahassee  
St. Joseph





Bird sightings spotted on hiking trails.



Wildlife nests atop of cypress trees.

Wildflowers along scenic drives.





One of six biodiversity hot spots in the U.S., Northwest Florida boasts more reptile, amphibian, and carnivorous plant species than any comparable area in the country due to its diversity of habitats.

In terms of wild places, a diversity of species, and the opportunity to see both, few places compare to Northwest Florida.

These range from crystal-clear springs and limestone caves to sparkling beaches and old-growth long-leaf pine forests. Most amazingly of all, these habitats lay within protected areas that allow them to be enjoyed and appreciated by all who visit this remarkable region.

A network of state and national forests, state parks, local preserves and even Air Force bases conserve millions of acres of natural habitat in Northwest Florida. These lands contain trails, roads, boardwalks and other amenities that allow visitors to experience Florida as it once was, without getting their feet too wet.

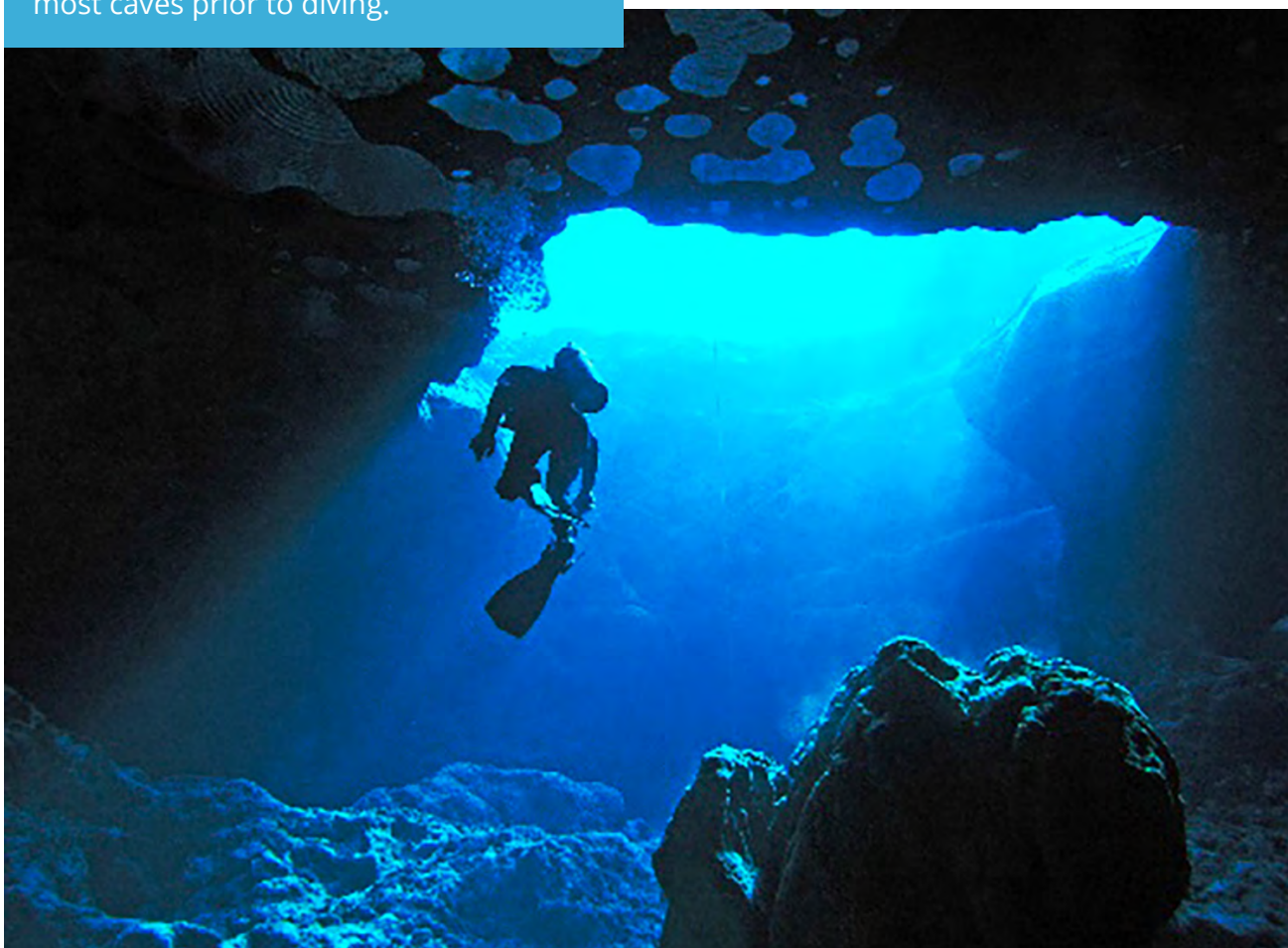
Many sites are part of the Great Florida Birding and Wildlife Trail, a series of the best birding spots in the region that offer wildlife enthusiasts the chance to see snowy plovers, red-cockaded woodpeckers, least terns, and much more.

Visiting any of these sites rewards experts and amateurs alike with scenes of beauty and juxtapositions they may never see elsewhere.

Spectacular views of carnivorous pitcher plants bursting out of a seepage bog. Absorb the natural views of mountain laurel and saw palmetto growing side-by-side in a steep ravine. Another incredible sight is a burrowing owl retreating to its burrow after a stealth bomber soars overhead.



Cave divers explore down under to find incredible wonders in the underworld. Cave diving certification is required at most caves prior to diving.





A small yet tight group of spelunkers know this area well. They come from all over the world to experience the dark curious underground wonders. Cave diving is a secret to many, but the ones who revel in it absolutely love it.

## Explore Fresh Springs Down Below

### Morrison Springs Park

In northeastern Walton County. It is already a favorite swimming hole for locals, but the 300-foot drop beneath the water is cat nip for divers. Bring your diving tanks to experience an incredible dive. It is open daily.

### Vortex Springs

This is a gorgeous spot to spelunk near Ponce de Leon. A spring feeds into the nearby Choctawhatchee River. It is an ideal dive for all levels of divers, explore and be full of stories. Visit the website at [vortexsprings.com](http://vortexsprings.com).

### Blue Springs Recreational Area and the Mill Pond

Just off of highway 90 in Marianna, Jackson Blue Springs feeds Merritt's Mill Pond. It is a 2-mile long lake that features six explorable caves. Scuba lovers flock from all over the world to dive in here. Obtain a county permit through Cave Adventurers prior to diving this area, give them a call 850.482.6016 or send them an email [caveadventurers@hotmail.com](mailto:caveadventurers@hotmail.com).

## Explore Salty Waters Down Below

### Florida Panhandle Shipwreck Trail

Barges, tugs, and other boats are now homes for all sort of sea life in the salt water. Some are shallow and others are deep. Find out more by visiting [floridapanhandledivetrail.com](http://floridapanhandledivetrail.com).

### Empire Mica Wreck off Indian Pass

Most saltwater wrecks were sunk on purpose. This one was not. A German U-Boat sank the British tanker during World War II. It sits like a ghost in 100 feet of water. Talk about chilling, surreal, and historical. Visit [scubaschedules.com](http://scubaschedules.com).

### Grayton Beach Underwater Museum of Art

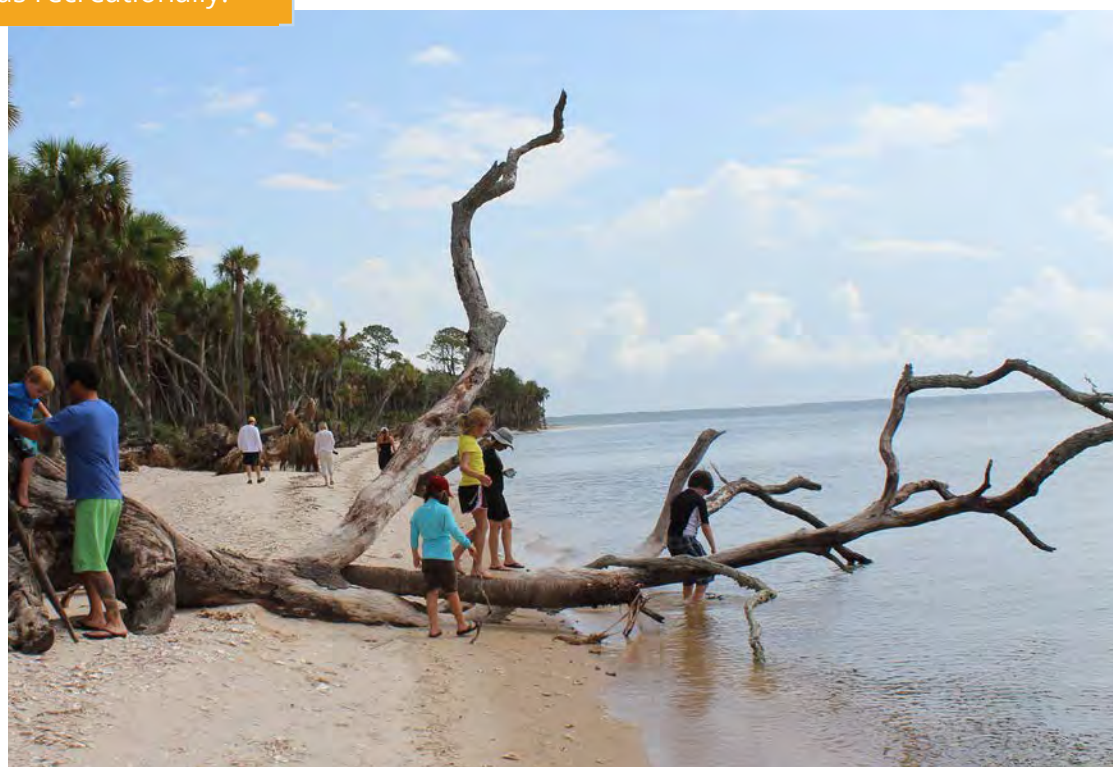
The amazing Underwater Museum of Art is the first underwater sculpture garden in the nation. Dive 60-feet under at .7 miles off the coast of Grayton Beach State Park and explore around to see the marine life habitat. Chosen sculptures are installed every year. For more info go to [umafl.org](http://umafl.org).

### Artificial Reefs off the Gulf Coast

Discover artificial reefs off of Panama City and South Walton Gulf shores.



The shores are diverse as the scenic region. The fresh, brackish and salty seashore play an important role biologically as well as recreationally.



# EXPLORE *Shores* NORTHWEST FLORIDA

The waterways flow different courses providing opportunities to cast a line, catch crabs or find treasures washed ashore.



The shores come in all shapes and sizes. Take a fishing boat out and drop a line, or swing the clubs along the shore at sunset.





Apalachicola was established as a fishing, shrimping, and oystering town. Hang out and watch the fishing boats pull in. The vibe today is Old Florida morphed with new interests. The museum exhibits are a must-see. Quincy restored the old Leaf Theatre and opened the impressive Gadsden Arts Center & Museum on the courthouse square. Recent exhibits include painter Norman Rockwell, wood sculptor Mark Lindquist, and other notable artists.



# EXPLORE *History & Culture* NORTHWEST FLORIDA

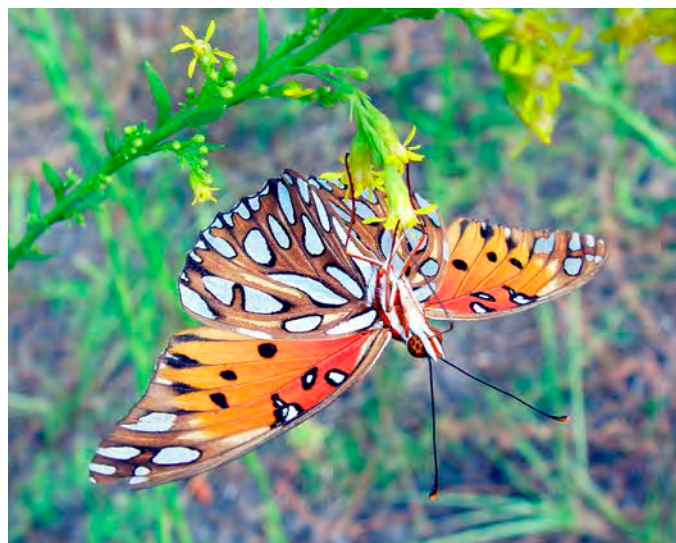
Preservation of Old Florida thrives in our towns, many of which host places on the National Register of Historic Places.



The historic bank building in Marianna was built in 1902 and was the first bank in the state to use an adding machine. Today it serves as a museum and event venue. Chipley is the epitome of a southern town with the railroad tracks dividing the historical brick buildings in downtown. The former railroad station is now home to Chipley historical museum hosting exhibits and events.



*Florida Native Wildflower Drive SR 65* — The scenic drive routes through the Apalachicola National Forest. Take Highway 65 just east of Eastpoint and head north through the Apalachicola National Forest. It is a 31-mile drive viewing grasslands, palmettos, and longleaf pinetrees. In the tiny town of Sumatra, turn on State Road 12 to Bristol. Keep an eye out for butterflies and wildflowers such as orchids, pitcher plants, and sundews. Watch out for bears.



*River Road on Lake Seminole*—Views include historic homes, cotton and peanut fields, ponds and Lake Seminole. Take Highway 71 from Marianna to Greenwood where nine antebellum homes stand. Hang a right on County Road 69 to Two Egg. Spot some of the largest oak trees around. From there, take 69A and follow it to River Road. Admire the ponds and the sloughs where ducks live among the alligators and egrets stop to rest.



*Bonifay*—Take Highway 79 north out of Bonifay in Holmes County and stop by the one-room log cabin. The road is more or less empty until it intersects with County Road 2. Hang a left and enjoy the solitude until encountering the Keith Cabin at the intersection of County Road 179. Take the winding 79 back to Bonifay and then brag about this relaxing part of Northwest Florida.



# EXPLORE *Cruising* NORTHWEST FLORIDA

Choose Your Cruising Adventure. Venture out on the back roads passing cotton and peanut fields, while figuring out what are the historical structures. Cruise the shores along the Gulf of Mexico for unforgettable scenic landscapes. Fill up the tank and hit the road.



*Scenic 30A Drive* —Architecture lovers will adore 16 unique planned neighborhoods along Highway 30A. It connects with Highway 98 just west of Panama City Beach. Slower speed limits enable the eye to gawk at picket fences, faux Spanish building, manicured lawns, and houses from another world. Follow 30A until it reconnects with Highway 98 and breathing returns to normal.



*Big Bend Scenic Byway Drive*—About 25 miles of the Byway's western route cruises through Apalachicola, Eastpoint, St George Island, Alligator Point, and Carrabelle. This stretch of the drive is best enjoyed at cruising speed to absorb the natural landscape and historic sites. The historic structures are sights depicting Old Florida. Stop in and tour the museums or state parks.

# EXPLORE Events NORTHWEST FLORIDA

The region's climate inspires an active vibe to fill the calendar with a multitude of events. Choose Your Adventure of local afternoon events or signature weekend festivals. The list goes on deep in the arts of well-known artist, exhibits, and shows. Experience cookoffs and salivate over national food competitions, set a new pace at a run race. Interpret amazing artist works at galleries and museums spread throughout the region. Elevate your stay and have a good time.





The fresh food around here plates delicious culinary dishes. Satisfy cravings at any individually owned eatery on the coast and inland. On the coast and inland, where our small-town restaurants are renown for their southern cuisine. Find local joints to fine dining along the back roads and through town squares. Be sure to sample local delicacies such as grouper throats, boiled peanuts, oysters, beef, and fresh produce.



Movie star Faye Dunaway star of the famous 1967 "Bonnie and Clyde," "Network" "Chinatown" is from Bascom.

Dr. John Gorrie, who played a major role in inventing air conditioning and refrigeration, is buried in Apalachicola.

Chicago Bulls basketball great Artis Gilmore was raised in Chipley.

Music legend Ray Charles grew up in Greenville, near Quincy. He moved to St. Augustine to attend the School for Deaf and Blind before pursuing his musical career.

Civil War era Florida Governor John Milton died in 1865 and was buried at St. Luke's Episcopal Church in Marianna.

Former professional football player Neal Anderson who played eight years for Chicago Bears was raised in Graceville.

# EXPLORE Famous NW Floridians NORTHWEST FLORIDA

Astronaut Norman E. Thagard hails from Marianna. He is the first American astronaut to ride in space on a Russian vehicle. Otherwise known as the first American cosmonaut.

The Lady Chablis, who was featured in the book and film "Midnight in the Garden of Good and Evil," was from Quincy.

Little House on The Prairie  
Author Laura Ingalls Wilder lived part of her adult life with her husband in Westville.

Singer Bobby Goldsboro, who scored a No. 1 hit with "Honey," was born in Marianna.



## Coastal Camp Sites

*Apalachicola, Carrabelle, Eastpoint, Grayton Beach, Mexico Beach, Miramar,  
Panama City, Port St. Joe, Santa Rosa Beach, St. George Island*

### *Panama City, Mexico Beach, Bay County*

#### *Panama City Beach*

Campers Inn  
8800 Thomas Drive  
Panama City Beach  
campersinn.net  
850-234-5731

**Emerald Coast RV Beach Resort**  
1957 Allison Avenue  
Panama City Beach  
sunrvresorts.com  
850-235-0924

**Fancy Camps**  
4607 State Park Lane  
Panama City Beach  
fancycamps.com  
850-628-9696

**Panama City Beach RV Resort**  
4702 Thomas Drive  
Panama City Beach  
panamacityrvresort.com  
850-249-7352

**Front Beach RV Park and Motel**  
9322 Front Beach Road  
Panama City Beach  
frontbeachrvparkandmotel.com  
850-234-2278

**Pineglen Motorcoach & RV Park**  
11930 Panama City Beach Pkwy  
Panama City Beach  
850-230-8535  
pineglenrvpark.com

**Raccoon River Campground**  
12209 Hutchison Blvd  
Panama City Beach  
850-234-0181  
raccoonriver.net

**St. Andrews State Park**  
4607 State Park Lane  
Panama City Beach  
850-233-5140  
floridastateparks.org

#### *Mexico Beach*

**El Governor RV Park**  
1701 US Highway 98  
Mexico Beach  
elgovernormotel.net/rv-park  
850-648-5757

**Rustic Sands Resort Campground**  
800 N 15th Street  
Mexico Beach  
campingfriend.com/rusticsandsresort

### *Carrabelle, Eastpoint, St. George Island Franklin County*

#### *Carrabelle*

**Ho Hum RV Park**  
2132 Highway 98 East  
Carrabelle  
850-697-3926  
hohumrvpark.com

**Carrabelle Beach RV Resort  
Outdoor Destination**  
1843 Highway 98 West  
Carrabelle  
850-697-2638  
carrabellebeachrv.com

**Sunset Isle RV & Yacht**  
260 Timber Island Road  
Carrabelle  
850-556-0051  
sunsetislerv.com

#### *Eastpoint*

**Coastline RV Resort**  
957 Highway 98  
Eastpoint  
850-799-1016  
coastlinervresort.com



Sportsman's Lodge On the Bay  
99 N Bayshore Drive  
Eastpoint  
850-670-8423  
sportsmanslodgeonthebay.com

*St. George Island*  
St. George Island State Park  
1900 East Gulf Beach Drive  
St. George Island  
850-927-2111  
floridastateparks.org

*Miramar, Grayton Beach,  
Santa Rosa Beach  
Walton County*

*Miramar*  
Camp Gulf  
10005 Emerald Coast Parkway  
Miramar Beach  
877-226-7485  
campgulf.com

Cyboney RV Resort  
2078 Scenic Gulf Drive  
Miramar Beach  
850-226-1079  
cyboneyrvresort.com

Destin RV Beach Resort  
362 Miramar Beach Drive  
Miramar  
850-837-3529  
destinrvresort.com

Geronimo RV Resort  
75 Arnett Lane  
Miramar  
850-424-6801  
geronimorvresort.com

*Grayton Beach*  
Grayton Beach State Park  
357 Main Park Road  
Grayton Beach  
850-267-8300  
floridastateparks.org

*Santa Rosa Beach*  
Peach Creek RV Resort  
4401 US Highway 98 East  
Santa Rosa Beach  
850-231-1948

Topsail Hill Preserve State Park  
7525 W County Highway 30A  
Santa Rosa Beach  
850-267-8330  
floridastateparks.org

*Port St. Joe  
Gulf County*

Indian Pass Campground  
2817 Indian Pass Road  
Port St Joe  
850-227-7203  
indianpasscamp.com

Old Salt RV Park  
340 Co Rd 386  
Port St Joe  
850-227-4246  
oldsaltrvpark.com

Presnell's Bayside Marina &  
RV Resort  
2115 County Road 30A  
Port St Joe  
850-229-9229  
presnells.com

Water's Edge RV Park  
8300 County Road 30A  
Port St Joe  
850-229-8600  
watersedgervpark.net



## Inland Camp Sites

*Alford, Blountstown, Bristol, Bonifay, Campbellton, Chattahoochee, Chipley, Cottondale, Defuniak Springs Ebro, Marianna, Midway, Ponce de Leon, Quincy, Sneads, Vernon, Westville, Youngstown*

*Alford, Campbellton,  
Cottondale,  
Marianna, Sneads,  
Jackson County*

### *Alford*

Compass Lake in the Hills  
645 Compass Lake Dr  
Alford  
850-579-4303  
[compasslake.org](http://compasslake.org)

### *Campbellton*

LilyPad Adventures  
3150 Highway 2  
Campbellton  
850-326-4165  
[lilypadadventures.com](http://lilypadadventures.com)

### *Cottondale*

Hitchin Post Corral & Campground  
2492 Dilmore Road  
Cottondale  
850-849-3741  
[hitchinpostcorralandcampground.com](http://hitchinpostcorralandcampground.com)

Sunny Oaks RV Park  
3091 Kynesville Rd  
Cottondale  
850-579-3933

### *Marianna*

Alliance Hill 50 Plus RV Park  
639 Plymouth Loop  
Marianna  
850-545-4928  
[alliancehillrv.com](http://alliancehillrv.com)

Dove Rest RV Campground  
1973 Dove Rest Dr  
Marianna  
850-482-5313

Florida Caverns State Park  
3345 Caverns Rd  
Marianna  
850-482-1228  
[floridastateparks.org](http://floridastateparks.org)

Florida Caverns RV Resort at  
Merritt's Mill Pond  
4820 Highway 90 East  
Marianna  
850.482.5583

### *Sneads*

Seminole Lodge  
2360 Legion Rd  
Sneads  
850-593-6886

Three Rivers State Park  
7908 Three Rivers Park Rd  
Sneads  
800-482-9006  
[floridastateparvks.org](http://floridastateparvks.org)

### *Youngstown Bay County*

### *Youngstown*

Augie's World RV Park &  
Campground  
2827 SR 20 West  
Youngstown  
850-674-3460  
[augiesworldrvpark.com](http://augiesworldrvpark.com)

*Chipley, Ebro, Vernon  
Washington County*

### *Chipley*

Falling Waters State Park  
1130 State Park Road  
Chipley  
850-638-6130  
[floridastateparks.org](http://floridastateparks.org)

Hard Labor Creek Off Road Park  
2009 Highway 277  
Chipley  
850-527-0615  
[hlcorpark.com](http://hlcorpark.com)

Seacrest Wolf Preserve  
3449 Bonnett Pond Road  
Chipley  
850-773-2897  
[seacrestwolfpreserve.org](http://seacrestwolfpreserve.org)

### *Ebro*

Pine Log State Forest  
5583 Long Leaf Road  
Ebro  
850-535-2888  
[floridastateforest.org](http://floridastateforest.org)

The RV Park of Ebro  
5398 Casey Road  
Ebro  
850-535-2705  
[campendium.com](http://campendium.com)



### *Vernon*

Southern Trails Campground  
4866 Holmes Valley Road  
Vernon  
850-535-6262  
campnative.com

### *Blountstown Calhoun County*

Scotts Ferry General Store &  
Campground  
6648 FL-17  
Blountstown  
850-674-2900

### *Bristol—Liberty County*

Torrey State Park  
2576 NE Torrey Park Road  
Bristol  
850-643-2674  
floridastateparks.org

### *Chattahoochee, Quincy, Midway—Gadsden County*

### *Chattahoochee*

Chattahoochee RV Park  
269 River Landing Road  
Chattahoochee  
850-663-4475  
chattgov.org/river-landing

East Bank Campground  
153 E. Bank Road  
Lake Seminole, GA  
229-662-9273

Triple C's Campground & RV Park  
2309 Flat Creek Road  
Chattahoochee  
850-442-3333  
floridaparks.org

### *Midway*

High Bluff Landing Campground  
Lake Talquin State Forest  
Midway  
850-681-5963  
floridastateforest.org/high-bluff

### *Quincy*

Pat Thomas Park  
949 Hopkins Landing Road  
Quincy  
850-875-4544  
gadsdencountyfl.gov/departments/  
parks\_and\_recreation

### *Bonifay, Ponce de Leon, Westville—Holmes County*

### *Westville*

Lake Victor  
1338 Lake Victor Road  
Westville  
850-956-4526  
lakevictorrv.com

### *Bonifay*

Outback Springs RV Resort  
90 Son-In-Law Road  
Bonifay  
850-258-3110  
outbackspringsrvresort.com

### *Ponce de Leon*

Vortex Spring  
1517 Vortex Spring Lane  
Ponce de Leon  
850-836-4979  
vortexspring.com

### *Defuniak Springs, Freeport Walton County*

### *Defuniak Springs*

Sunset King Lake Resort  
366 Paradise Island Drive  
DeFuniak Springs  
800-774-5454  
sunsetking.com

Twin Lakes Resort  
580 Holley King Lake Road  
DeFuniak Springs  
850-892-5914

Bass Haven Campground  
363 Black Bass Boulevard  
DeFuniak Springs  
850-892-4043

### *Freeport*

Live Oak Landing RV Resort  
229 Pitts Avenue  
Freeport  
877-436-5063  
Liveoaklandingresort.com

Calypso Cove RV Park  
18655 U.S. Hwy. 331 S  
Freeport  
850-835-4606



Northwest Florida shines bright with natural wonders, charming towns, and historic sites to discover. Adventure seekers or leisure relaxers find sanctuary here. The participating counties and organizations support and contribute to Explore Northwest Florida.



Visit **Washington** County



*Experience Life Naturally*

[visitwcfla.com](http://visitwcfla.com)



# EXPLORE Visitor Centers NORTHWEST FLORIDA

Stop by a Visitor Center in Northwest Florida for local expert tips and advice on things to do and places to go.

## BAY COUNTY

Mexico Beach Community Development Council  
Welcome Center  
102 Canal Parkway  
Mexico Beach, FL 32456  
888.723.2546  
[www.mexicobeach.com](http://www.mexicobeach.com)

Destination Panama City  
228 Harrison Avenue  
Panama City, FL 32401  
850.215.1700  
[www.destinationpanamacity.com](http://www.destinationpanamacity.com)

Visit Panama City Beach  
17001 Panama City Beach Parkway  
Panama City Beach, FL 32413  
850.233.7050  
[www.visitpanamacitybeach.com](http://www.visitpanamacitybeach.com)

## CALHOUN COUNTY

Calhoun County Chamber of Commerce  
Central Avenue East, Suite 2  
Blountstown, FL 32424  
850.674.4519  
[www.calhounco.org](http://www.calhounco.org)

## FRANKLIN COUNTY

Franklin County Visitor Center  
731 Highway 98  
Eastpoint, FL 32328  
850.670.3474  
[www.floridasforgottencoast.com](http://www.floridasforgottencoast.com)

## GADSDEN COUNTY

Gadsden County Tourist Development Council  
9-B East Jefferson Street  
Quincy, FL 32353  
850.875.8650  
[www.dosomethingoriginal.com](http://www.dosomethingoriginal.com)

## GULF COUNTY

Gulf County Welcome Center  
150 Captain Fred's Place  
Port St. Joe, FL 32456  
800.482.GULF  
[www.visitgulf.com](http://www.visitgulf.com)

## HOLMES COUNTY

Holmes County Chamber of Commerce  
106 East Byrd Avenue  
Bonifay, FL 32525  
850.547.6153  
[www.holmescountytcdc.com](http://www.holmescountytcdc.com)

## JACKSON COUNTY

Jackson County Visitor Center  
4318 Lafayette Street  
Marianna, FL 32446  
850.482.8061  
[www.visitjacksoncountyfla.com](http://www.visitjacksoncountyfla.com)

## LIBERTY COUNTY

Liberty County Chamber of Commerce  
11493 Summers Road  
Bristol, FL 32321  
850.643.2359  
[www.libertycountyflorida.com](http://www.libertycountyflorida.com)

## WALTON COUNTY

South Walton Visitor Center  
25777 US Highway 331 South  
Santa Rosa Beach, FL 32459  
850.267.1216  
[www.visitsouthwalton.com](http://www.visitsouthwalton.com)

## WASHINGTON COUNTY

Washington County Visitor Center  
672 5th Street  
Chipley, FL 32428  
850.638.6013  
[www.visitwcfla.com](http://www.visitwcfla.com)



**EXPLORE  
NORTHWEST  
FLORIDA**

*Choose Your  
Adventure*

[explorenwflorida.com](http://explorenwflorida.com)